



**1266PX**  
THERMAL  
RESOLUTION

**16MPX**  
RGB CAMERA  
RESOLUTION

**30X**  
OPTICAL  
ZOOM

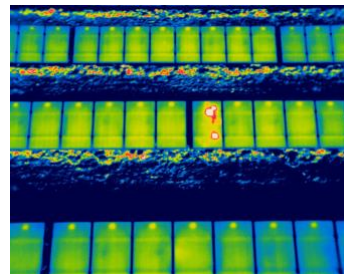
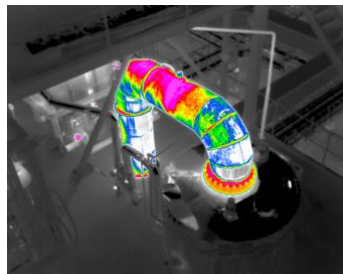
**1500M**  
RANGEFINDER

**0.03°C**  
SENSITIVITY



# WIRIS ENTERPRISE G

HIGH PERFORMANCE 3-AXIS STABILIZED GIMBAL



---

## Datasheet

---

Release date: 9<sup>th</sup> of February 2026

Version: 260204

# WIRIS Enterprise G technical specification

WIRIS Enterprise G Key features description	
<b>Super Resolution Mode</b>	Super Resolution Mode takes 1 266px Radiometric image in one shot
<b>Operating onboard system</b>	WIRIS OS for full real-time data streaming and control during the flight - operating system ensures the full access to all camera functions - easy camera control via S.Bus, CAN bus, MavLink, Ethernet (RTSP) - trigger input for image recording, alarm output for confirmation
<b>30x Optical antivibration zoom</b>	Full HD 30x optical zoom camera with antivibration compensation
<b>Laser rangefinder</b>	Distance measurement 10 to 1500 m (32 to 4920 ft), divergence: 1.4 x 0.4 mrad, EN 60825-1:2015-07 eye-safe 905nm
Thermal camera specification	
<b>IR camera resolution</b> (non-ITAR versions)	640 x 512 pixels (Radiometric), 640 x 480 pixels (Non-Radiometric)
<b>IR Super Resolution Mode</b> (Radiometric version)	1 266 x 1 010 pixels (improvement of native resolution up to 1.3 Mpx)
<b>FPA active sensor size</b>	1.088 x 0.8705 cm
<b>Temperature ranges</b> (Radiometric version)	up to +150 °C (up to 302 °F), Low Gain up to +350 °C (up to 662 °F), High Gain
<b>Scene temperature range</b> (Non-Radiometric version)	up to +150 °C, (up to 302 °F), Low gain up to +550 °C, (up to 1 022 °F), High gain
<b>Temperature sensitivity</b>	Standard 0.03 °C (30 mK)
<b>Temperature accuracy</b> (Radiometric version)	±2 % or ±2 °C (in temperature range -10 °C to +150°C and 0 °C to +350°C)
<b>Frame rate</b>	30 Hz
<b>Spectral range / detector</b>	7.5 – 14 μm / Uncooled VOx microbolometer
<b>Radiometric calibration</b>	Package includes a calibration certificate (radiometric version)
<b>Thermal lens FOV</b>	32° (14mm for Radiometric, 19mm for non-Radiometric)
<b>Protective filter on lens</b>	Filter protects the lens against external damage during the flight
<b>Thermal image digital zoom</b>	1 – 12x steps
Digital RGB cameras – WIRIS Enterprise G is equipped with two RGB cameras	
<b>High resolution fixed camera</b>	<b>Resolution:</b> 4 656 x 3 496 pixels (16 Mpx), 1/2.8" IMX298 sensor <b>Field of view:</b> extra wide DFOV 73.2°, focal 4.35mm <b>Settings:</b> configuration and stream in advanced auxiliary menu
<b>30x optical zoom camera</b>	<b>Resolution:</b> 1 920 x 1 080 pixels (Full HD), 1/2.8" EXMOR R CMOS sensor <b>Field of view:</b> 30x optical zoom with vibration compensation and image stabilization, ultra-zoom HFOV 2.3° - extra wide 63.7°, focal 129.0 mm - 4.3 mm
<b>Optical zoom camera Image enhancement</b>	Auto-white balance, WDR, IR cut filtering, DEFOG, 3D noise reduction
<b>Optical focus camera - autofocus</b>	Autofocus with Direct Focus Zoom synchronization



Memory and data recording	
<b>Memory</b>	Internal high-speed SSD 128GB for image and video recording External slot for Micro SD card & USB 2.0 for USB stick for taking images
<b>Image and video formats</b> (Radiometric data is valid for radiometric version only)	16Mpx high resolution camera JPEG images, Optical zoom camera Full HD JPEG images, Radiometric IR JPEG and IR TIFF images (only Pix4D and Agisoft compatible for 3D modeling) Digital camera h.264 encoded video HD recording Radiometric full-frame IR recording (raw data recording 30 Hz or < 9 Hz)
GPS geo-tagging (image & video)	
<b>GPS tagging (image &amp; video)</b>	MavLink or External GPS (NMEA)
Interfaces & real-time remote control	
<b>Quick Release interface</b>	UART Ethernet (100base-T) S.BUS CAN bus HDMI USB-C (tuning)
<b>Ethernet (RJ-45) port</b>	Video streaming (RTSP) and camera control (API)
<b>Micro USB 2.0 port</b>	Mass storage, USB OTG
<b>USB-C port communication</b>	Gimbal tuning
<b>Remote control system</b>	WIRIS OS ensures real-time control of all camera functions during the flight via onboard WIRIS operating system
<b>Remote control options</b>	S.BUS - Futaba protocol UART - Command Control Protocol, Mavlink or NMEA CAN bus - Command Control Protocol Ethernet - SDK and tutorial App available (API), RTSP video streaming
<b>Camera functions</b> (Radiometric data is valid for radiometric version only)	<b>Measurement functions:</b> Hot/cold spot detection, center point <b>Temperature range settings:</b> Automatic, manual or span mode <b>Advanced alarm modes:</b> Above, below, between, above & below <b>Multi camera modes:</b> Full screen mode, IR only, RGB only, Picture in Picture with blending option <b>Periodic capturing:</b> From 1s, IR and RGB images simultaneously <b>Trigger speed of capturing:</b> around 200ms for radiometric image <b>Temperature units:</b> Celsius, Fahrenheit, Kelvin <b>NUC control settings:</b> Automatic (synchronous/asynchronous), manual or triggered
<b>Micro HDMI video output</b>	1 280 x 720 pixels (720p), Aspect ratio 16:9, Micro HDMI video output
Software & SDK	
<b>Desktop software &amp; SDK</b>	Advanced desktop FREE software ThermoLab for data analysis Ethernet SDK app for in-house maintenance and flight control
Power supply, weight & dimensions	
<b>Input supply voltage</b>	12 VDC



<b>Power dissipation</b>	< 21 W average
<b>Weight</b>	< 920 grams (2.02 lb) including Rangefinder
<b>Dimensions (L x W x H)</b>	180 mm x 138 mm x 158 mm (7.08 in x 5.43 in x 6.22 in)
<b>Mounting</b>	4 x M2 thread & Quick Release
<b>Housing material</b>	Durable aluminium body for long-time measurement stability
<b>Axis mechanical range</b>	Mechanical: Yaw $\pm$ 345°, Pitch – 90° (up) 135° (down), Roll $\pm$ 45°
<b>Environmental</b>	
<b>Operating temperature range</b>	-15 °C to +50 °C (5 °F to 122 °F)
<b>Storage temperature range</b>	-30 °C to +60 °C (-22 °F to 140 °F)
<b>IP rating</b>	IP54



# Contact information

WORKSWELL IN THE WORLD



## Find our partners worldwide

[www.workswell.eu/where-to-buy](http://www.workswell.eu/where-to-buy)

### SALES DEPARTMENT

Website: [www.workswell.eu](http://www.workswell.eu)  
E-mail: [sales@workswell.eu](mailto:sales@workswell.eu)  
Mobile: +420 737 547 622

### COMPANY CONTACT

Website: [www.workswell.eu](http://www.workswell.eu)  
E-mail: [info@workswell.eu](mailto:info@workswell.eu)  
Mobile: +420 725 877 063

### OFFICE LOCATIONS

Europe - Prague  
United States of America  
Global partner network

[www.workswell.eu](http://www.workswell.eu)

